

# BENT TREE LOFTS



First Level

[benttreelofts.com](http://benttreelofts.com)

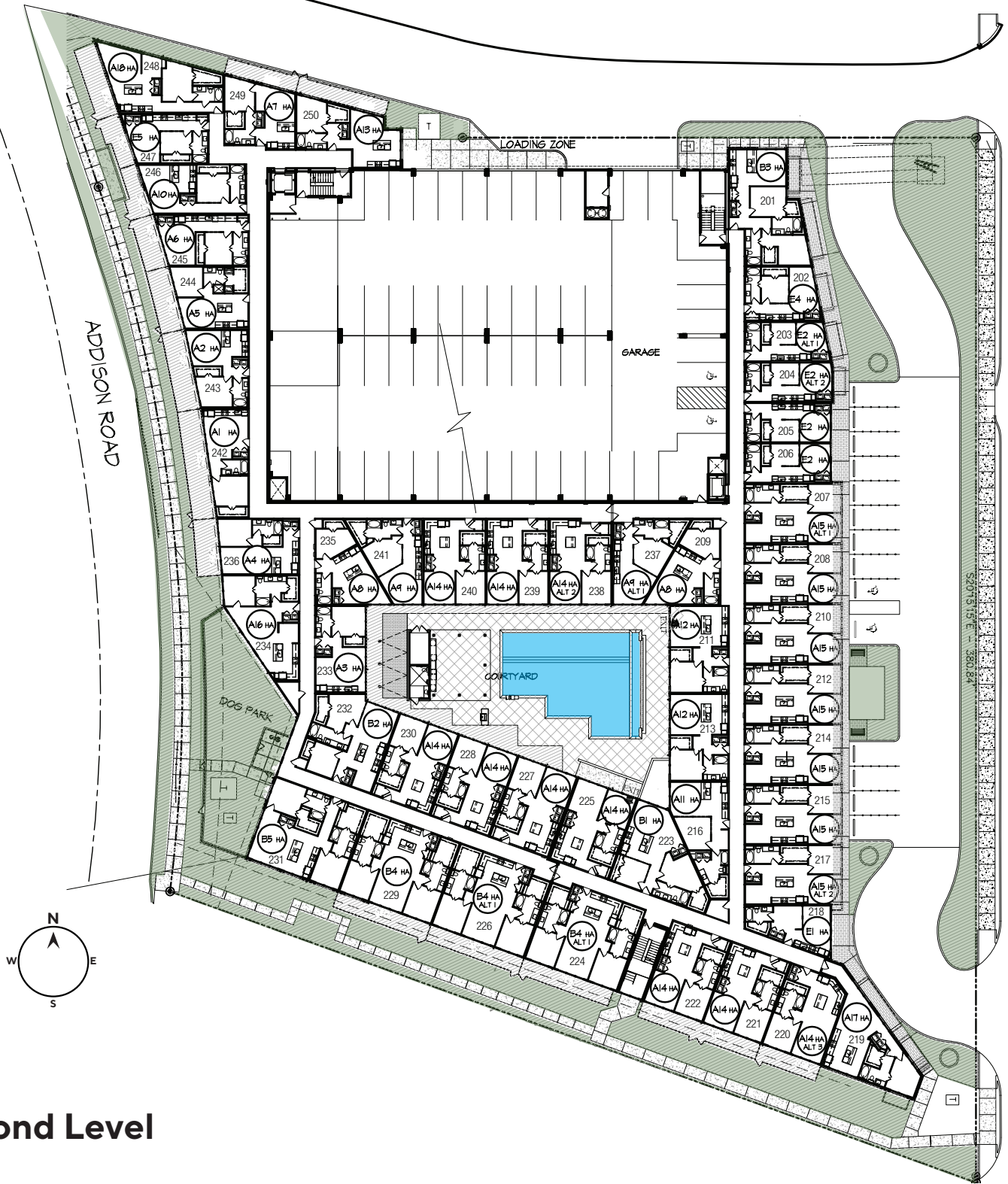
972.989.2426

17501 Dallas Parkway  
Dallas, TX 75287



Square footages and dimensions are approximate and may vary slightly. Not all units have balconies. Rental rates, availability, deposits and specials are subject to change without notice. Minimum lease occupancy guidelines apply. Deposits may fluctuate based on credit, rental history, income and/or other qualifying standards. Additional taxes and fees may apply and will be disclosed prior to lease signing.

# BENT TREE LOFTS



## Second Level

[benttreeLOfts.com](http://benttreeLOfts.com)

972.989.2426

17501 Dallas Parkway  
Dallas, TX 75287



Square footages and dimensions are approximate and may vary slightly. Not all units have balconies. Rental rates, availability, deposits and specials are subject to change without notice. Minimum lease occupancy guidelines apply. Deposits may fluctuate based on credit, rental history, income and/or other qualifying standards. Additional taxes and fees may apply and will be disclosed prior to lease signing.

# BENT TREE LOFTS



Third Level

[benttreeLOfts.com](http://benttreeLOfts.com)

972.989.2426

17501 Dallas Parkway  
Dallas, TX 75287



Square footages and dimensions are approximate and may vary slightly. Not all units have balconies. Rental rates, availability, deposits and specials are subject to change without notice. Minimum lease occupancy guidelines apply. Deposits may fluctuate based on credit, rental history, income and/or other qualifying standards. Additional taxes and fees may apply and will be disclosed prior to lease signing.



# BENT TREE LOFTS



## Fourth Level

[benttreeLOfts.com](http://benttreeLOfts.com)

972.989.2426

17501 Dallas Parkway  
Dallas, TX 75287



Square footages and dimensions are approximate and may vary slightly. Not all units have balconies. Rental rates, availability, deposits and specials are subject to change without notice. Minimum lease occupancy guidelines apply. Deposits may fluctuate based on credit, rental history, income and/or other qualifying standards. Additional taxes and fees may apply and will be disclosed prior to lease signing.